



**Wrightsville United Methodist Preschool News**  
**January 1, 2017**

**Dates to Remember:**

- |                          |        |   |
|--------------------------|--------|---|
| January 1                |        | All tuition payments due. Don't forget to write the year <b>2017</b> on your check! 😊   |
| January 3                | Tues.  | First day back to school for all classes! HOORAY!   |
| January 4                | Wed.   | All Lunch Bunch forms due. <b>Please turn this form in on time, even if you don't have your check with you.</b>                   |
| January 12               | Thurs. | All Scholastic Book Orders due. If ordering online, go to: <b>Scholastic.com</b> . Our <b>Online School Code</b> is: <b>P8PXL</b> |
| January 16               | Mon.   | No School - MLK Jr. Holiday   |
| January 18               | Wed.   | Parent/Teacher Conferences for all children in the 3-5 year old classes. See back for more details                                |
| <b>January 18 and 19</b> |        | <b>*****Wednesday and Thursday*****</b>   |
| <b>REGISTER</b>          |        | <b>Registration for the 2017-2018 school year will</b>  |
| <b>FOR</b>               |        | <b>be open to currently enrolled students and siblings.</b>   |
| <b>FALL!</b>             |        | <b>To guarantee your child's placement for next</b>   |
|                          |        | <b>year, you will be required to fill out a registration form</b>   |
|                          |        | <b>and pay the non-refundable registration fee of \$75.</b>   |
|                          |        | <b>Check out more registration details on the next page.</b>  |
| January 24               | Tues.  | <b>Muffins With Moms-Bright and Early 8:45-9:30</b>   |

### **Parent/Teacher Conferences:**

On Conference Day, Wednesday- January 18th , regular preschool classes **will not** be held. Childcare for your preschooler and siblings will be provided by Mrs. Cara and Mrs. Shannon in the baby nursery on the main hall, during your scheduled meeting time only. Signup sheets for conference times will be posted on top of the class cubbies. Please be courteous to other parents by helping us stay on schedule. Please arrive on time and understand that conferences should not exceed 15-20 minutes. If you are unable to meet with your child's teacher on the 18th, you may reschedule for a time that is mutually convenient.

Some of you have children with "late birthdays" who will be kindergarten eligible in the fall. You may be wondering if you should enroll your child in kindergarten or give them an extra year of preschool. There are many online articles and checklists such as the one found at: <http://www.scholastic.com/parents/resources/article/what-to-expect-grade/ready-kindergarten> . We will review a progress report with you at conference time and will let you know of any concerns. Otherwise, the choice to send a younger child on to kindergarten often boils down to parental preference. My advice is, don't just look at your child's birth date, each child is different and develops in their own unique way. Looking at your child's social and emotional readiness, attentiveness and self help skills are equally as important as their cognitive development and motor skills. I do know that Kindergarten teachers are very pleased when children begin the school year appropriately attentive for their age, confident and eager to learn!

**2017-2018 Preschool Registration.** Registration Time is quickly approaching and will begin January 18th, the day of Parent/Teacher Conferences. Currently enrolled children and their siblings may enroll on the 18th and 19th and then we will open enrollment to children on our waiting list beginning on Friday, January 20th.

On either of the two days of registration, you will need to submit an enrollment form and pay a non-refundable \$75 registration fee to guarantee your child's placement for the upcoming school year. Registration forms will be available in your child's cubby prior to conferences and will also be available on conference day.

If you have friends or extended family who are interested in our program, the time to get on the wait list is NOW! Please have them call the church number 910-256-4471 or my cell number 910-233-7887 and leave a voice mail.

We will again offer four classes for the 2017-18 school year . Young Threes, Older Threes, Fours and Four/Fives.

Thanks for helping spread the word!!!

**Thank you! Thank you! Thank you!**

To Sarah Yorba (Ames' Mom) for being our special guest during "Kk" Week Teaching and teaching us all about kaleidoscopes and sharing other great K words to build our vocabulary!

To Mrs. Terry (Mason's Murphy's Nanny) for baking our beautiful Baby Jesus Birthday Cake for our Christmas Celebration.



**Don't Forget Muffins with Moms  
and other Special Ladies!**

**8:45 am , Tuesday, January 24<sup>th</sup>**

**Upstairs in the Fellowship Hall**

**We are looking forward to seeing you!**

**Be sure to note the Bright and Early time! After enjoying muffins, milk and juice with the kids, we invite our Moms down to visit the classrooms and playground! If Mom can't make it and your child would like to come with an aunt, grandmother, nanny or other special lady, that will be terrific too! Moms, we'd love to keep you all day, BUT we have important kid stuff to attend to 😊. So..... grownups will dismiss by 9:30.**

### **Severe Weather/School Cancellations Reminder:**

When county schools are closed due to severe weather, Wrightsville United Methodist Preschool will also be closed. When the county schools open late we will likely be closed for the day, but this will be left to the discretion of the preschool director. If the county schools close early, our preschool will also close early. Please listen to the radio or television for closing announcements. You will also receive notification by email from the director.

### **Reminders of Ways to Help our Preschool:**

1. Please make every effort to get your child to school on time, even on these cold winter mornings! The children are better able to settle down for Circle Time if they have had an appropriate amount of time to check out the new activities in the classroom for the week and to greet their friends and teachers.

2. If the temperature is above freezing with the wind chill factored in, we WILL be going outside! Please be sure your child comes to school with the appropriate outdoor attire.

3. **Please turn in your Lunch Bunch Form by the designated date listed on the form.** This saves Ruth from handling administrative duties during valuable class time which would be better spent interacting with the kids. Thanks so much with your help with this!
4. Please recycle your printer cartridges with us if you don't already recycle elsewhere! We've already earned \$80 worth of paper, laminating film and ink this year, so every little cartridge helps. The collection envelope for printer cartridges is on the preschool bulletin board.
5. If you have the Wilmington attractions coupon book and you do not care to use the coupons for Michael's or AC Moore Craft stores, please consider donating the 40% off coupons to our school! All the teachers shop at these stores regularly for extra supplies to enhance our arts and crafts projects.

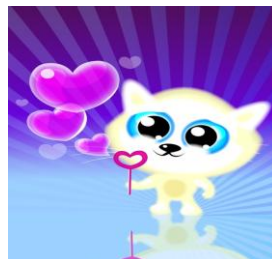
## 2017

Promises to be another exciting year as it brings about many wonderful changes in your preschooler.

Our staff is looking forward to working with your child as they continue to learn, grow in body and spirit and become increasingly more independent!



*Megan, Shannon, Teresa, Cara, Manuela,  
Mandy, Johnna and Ruth*



## Thursday Lunch Bunch

Child's Name \_\_\_\_\_

Please check the days your child will be staying for Thursday Lunch Bunch this month:

Jan. 5 \_\_\_\_\_

Jan. 12 \_\_\_\_\_

Jan. 19 \_\_\_\_\_

Jan. 26 \_\_\_\_\_

Number of Lunch bunch days \_\_\_\_\_ X \$5.00 = \_\_\_\_\_

Please turn in this form by **Wednesday January 4<sup>th</sup>**. You may add total to your tuition check for January. Reminder: 3 day a week tuition is 180.00/month and 4 day is \$200.00/month. Thank you.

## Thursday Lunch Bunch

Child's Name \_\_\_\_\_

Please check the days your child will be staying for Thursday Lunch Bunch this month:

Jan. 5 \_\_\_\_\_

Jan. 12 \_\_\_\_\_

Jan. 19 \_\_\_\_\_

Jan. 26 \_\_\_\_\_

Number of Lunch bunch days \_\_\_\_\_ X \$5.00 = \_\_\_\_\_

Please turn in this form by **Wednesday January 4<sup>th</sup>**. You may add total to your tuition check for January. Reminder: 3 day a week tuition is 180.00/month and 4 day is \$200.00/month. Thank you.